

iBrain, Inc.



Intelligent Solutions for your business

Accounting Software Solutions

..... a division of iBrain, Inc.

E-File 1099-MISC 2011

Installation and Registration Guide

For Peachtree



Development Partner

SILVER

Program design and code Copyright ©2010-2011 iBrain, Inc.

3901 Barrett Drive Suite 205 Raleigh, NC 27609
Phone: 919-981-0505 or 800-322-4650 Fax: 919-981-0099
Web: www.ibraininc.com Email: Sales@ibraininc.com

This page is intentionally blank.

Table of Contents

Table of Contents.....	ii
Table of Figures	ii
Initial Documentation Notes:	iii
General Requirements:.....	iii
Accounting Package Requirements (Please Read Carefully!)	iv
Program Installation	1
Installing E-File 1099-MISC 2011	2
Installing Prerequisites.....	3
Installing SQL Server 2005 Compact Edition.....	3
Disabling User Access Control (Windows Vista/Windows 7 Only)	3
Installing Adobe Acrobat Reader	5
Uninstalling E-File 1099-MISC 2011	5
Product Registration	7
Registering E-File 1099-MISC 2011	8
Product Registration	8
Company Selection.....	9
Adding a Company	10
Open or Add a Company.....	10
Peachtree Version.....	11
Select Company	12
Company Information	13
Opening a Company	14
Product Registration	16
Trial Programs.....	17
Product Registration	18
IBrain, Inc. Support Policy.....	19
Feedback	19
Notes:.....	19

Table of Figures

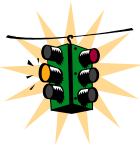
Figure 1: User Access Control (Windows Vista)	3
Figure 2: User Access Control Window (Windows 7).....	4
Figure 3: Product Registration Information Window.....	8
Figure 4: Company Selection Window	10
Figure 5: Company Selection Window, Peachtree Version Step	11
Figure 6: Company Selection Window, Company Selection Step (Peachtree)	12
Figure 7: Browse for Peachtree Data Path.....	12
Figure 8: Company Selection Window, Company Info Step	13
Figure 9: Verify Company Information Dialog	13
Figure 10: Company Selection Window, Company Selection Step	14
Figure 11: Trial Notification Window.....	17
Figure 12: Product Registration Window.....	18

Initial Documentation Notes:

Throughout this text, unless clearly indicated to the contrary, the term “E-File” refers to the Application.

General Requirements:

- Pentium 1.8 ghz or faster. A faster processor may be required by your accounting package.
- 1 GB of RAM. Speed may increase as the amount of memory increases.
- Hard disk with 60 MB of disk space for installation. We recommend at least 500 MB of free space to be available on the Hard Disk at all times.
- A graphics card set to an 800x600 screen resolution. While E-File will work with lower screen resolutions, you will have to scroll to see all of some windows.
- One of the following versions of Microsoft Windows:
 - Windows 2000 with Service Pack 4 or greater installed
 - Windows XP with Service Pack 3 or greater installed (32 or 64-bit)
 - Windows Vista (32 or 64-bit) Service Pack 2 recommended
 - Windows 7 (32 or 64-bit)
- Microsoft .NET Framework v2 must be installed.
- Microsoft SQL Server Express 2005 must be installed. This is provided on the CD or as a download from our web site at <http://www.ibraininc.com>. If you have installed any prior version of E-File this software is already on your computer.



**Windows 95, 98, 98SE, Windows NT 4, and ME are NOT supported.
This product will not operate in a Windows Terminal Server Environment using
Windows Terminal Services.**

Accounting Package Requirements (Please Read Carefully!!)

- One of the following releases of Peachtree:

Peachtree Pro Accounting 2012/2011/2010
Peachtree Complete Accounting 2012/2011/2010
Peachtree Premium Accounting 2012/2011/2010
Peachtree Premium Accounting for Manufacturing 2012/2011/2010
Peachtree Premium Accounting for Distribution 2012/2011/2010
Peachtree Premium Accounting for Construction 2012/2011/2010
Peachtree Premium Accounting for Non-Profit 2012/2011/2010
Peachtree Quantum 2012/2011/2010

E-File only supports the versions of Peachtree listed above. If you are planning to upgrade to a newer version of Peachtree contact iBrain, Inc. at 800-322-4650 before upgrading. Please note that it may take up to 60 days to release a version of E-File compatible with the newest release of Peachtree.

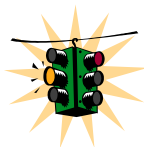
- **DO NOT** attempt to enter or change company data while E-File is retrieving data.
- You must know the name of the folder in which Peachtree has stored your data and where that folder is (the path) on your computer's hard drive.

This page is intentionally blank.

1 Program Installation

This section covers installing **E-File 1099-MISC
2011**.

Installing E-File 1099-MISC 2011



A user who has Windows Administrator rights must install this program. Before installing E-File, restart the computer and make sure that all other programs are closed. This means closing Peachtree, as well as toolbars such as those from Microsoft Office®.

Installing from CD:

1. Insert the E-File disc into the CD-ROM drive. If the **Install Wizard** window does not automatically appear:
 - Click on **Start**, then on **Run**.
 - Type in **X:\Apps\SETUP** where the “X” represents the CD-ROM drive letter and click **OK**.
2. Click on **Install “E-File 1099-MISC 2011”** (3rd Option) from the list of items to start the installation.
3. If the .NET Framework v2 installed, it will be installed now.
 - ***If the E-File program downloaded from our web site, it will download the .NET Framework and install it if it is not installed. An internet connection is required to download the .NET Framework installation files. The installation program is approximately 23MB and takes a few minutes to download on a broadband (cable, DSL) connection. On a dial-up connection, it will take at least 1 hour to download the .NET Framework installation files. After the .NET Framework install is completed, it will prompt to restart the computer.***
4. Follow the prompts until you get to the **End-User License Agreement**.
5. Read the **End-User License Agreement**. The continue installation, select **I accept the terms of the License Agreement** and click **Next** to continue to the next step.
6. Select which accounting package will be used with this software, QuickBooks or Peachtree. Click **Next** to continue to the next step.
7. On the **Ready to Install the Program** step, examine the current installation settings. If they are correct, click **Install** to begin the program installation. Once the program installation is complete, click **Finish**.

Installing from a file downloaded from our web site at <http://www.ibraininc.com>:

Open the file. It may ask to run the program.

1. If the .NET Framework v2 installed, it will be installed now.
 - ***If the E-File program downloaded from our web site, it will download the .NET Framework and install it if it is not installed. An internet connection is required to download the .NET Framework installation files. The installation program is approximately 23MB and takes a few minutes to download on a broadband (cable, DSL) connection. On a dial-up connection, it will take at least 1 hour to download the .NET Framework installation files. After the .NET Framework install is completed, it will prompt to restart the computer.***
2. Follow the prompts until you get to the **End-User License Agreement**.
3. Read the **End-User License Agreement**. The continue installation, select **I accept the terms of the License Agreement** and click **Next** to continue to the next step.
4. Select which accounting package will be used with this software, QuickBooks or Peachtree. Click **Next** to continue to the next step.
5. On the **Ready to Install the Program** step, examine the current installation settings. If they are correct, click **Install** to begin the program installation. Once the program installation is complete, click **Finish**.

Installing Prerequisites

E-File requires SQL Server 2005 Compact Edition to be installed. While E-File will install without these items installed they must be installed before E-File is started for the first time.

Installing SQL Server 2005 Compact Edition

In order for E-File to be able to open its database SQL Server 2005 Compact Edition must be installed. To do so click **Install SQL Server 2005 CE** from the Install Wizard menu or download and run the installer from one of the following locations:

Microsoft's web site:

<http://www.microsoft.com/downloads/details.aspx?FamilyID=85e0c3ce-3fa1-453a-8ce9-af6ca20946c3&DisplayLang=en>

iBrain's web site: <http://www.ibraininc.com/downloads/misc/SSCERuntime-ENU.msi>

Administrative rights are required in order to install the program.

Disabling User Access Control (Windows Vista/Windows 7 Only)

User Access Control (UAC) was added to Windows Vista and Windows 7 to decrease the chance of malware or viruses infecting your computer. However Microsoft SQL Server 2005 Compact Edition requires UAC to be disabled in order to install properly. The UAC Settings can be changed back when the installation is complete.

To disable UAC:

1. Click the Start button and select Control Panel.
2. Under Vista:
 - Click **User Accounts and Family Safety** then **User Accounts** (standard view) or **User Accounts** (Classic View).
 - Click **Turn User Access Control on or off**.
 - Click OK. A dialog will appear asking to restart the system.



Figure 1: User Access Control (Windows Vista)

3. Under Windows 7:

- Click **User Accounts**, then **User Accounts** again.
- Click **Change User Account Control settings**.
- On the User Account Control settings, slide the bar from **Default** to **Never Notify**
- Click **OK**. A dialog will appear asking to restart the system.

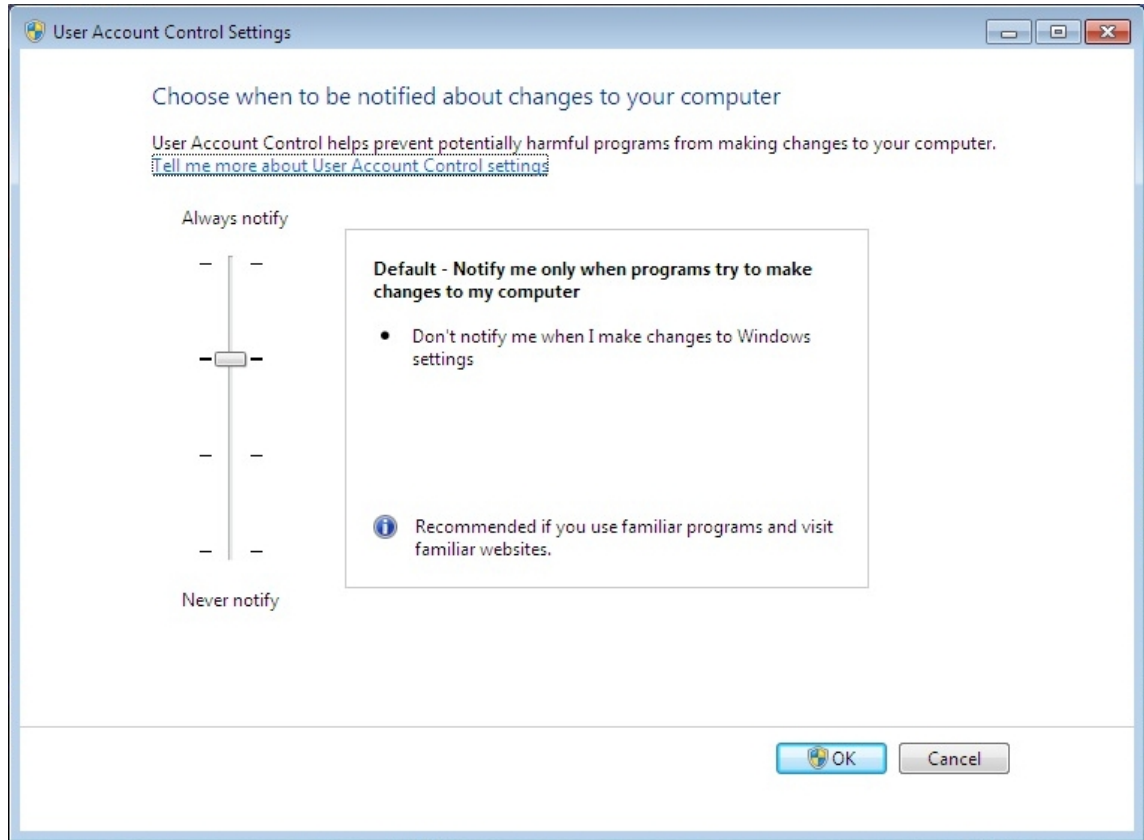


Figure 2: User Access Control Window (Windows 7)

Installing Adobe Acrobat Reader

Documentation for E-File is installed with the program. To view these files, **Adobe Acrobat Reader** must be installed.

To install **Adobe Acrobat Reader**, click on the **Install Acrobat Reader** item from the **Install Wizard** window and follow the prompts.

Uninstalling E-File 1099-MISC 2011

To uninstall E-File, go to Add/Remove Programs and select E-File 1099-MISC 2011 from the list of programs. Please note that any data files made by E-File are not removed since they are stored in a separate location.

To remove the data for E-File, it is stored in the following locations:

Windows 2000, XP:

C:\Documents and Settings\All Users\Application Data\Accounting Software Solutions\EFile1099MISC2011

Windows Vista, Windows 7:

C:\ProgramData\Accounting Software Solutions\EFile1099MISC2011

This page is intentionally blank.

2 Product Registration

Topics covered in this section:

- **E-File 1099-MISC 2011** Product Registration

Registering E-File 1099-MISC 2011

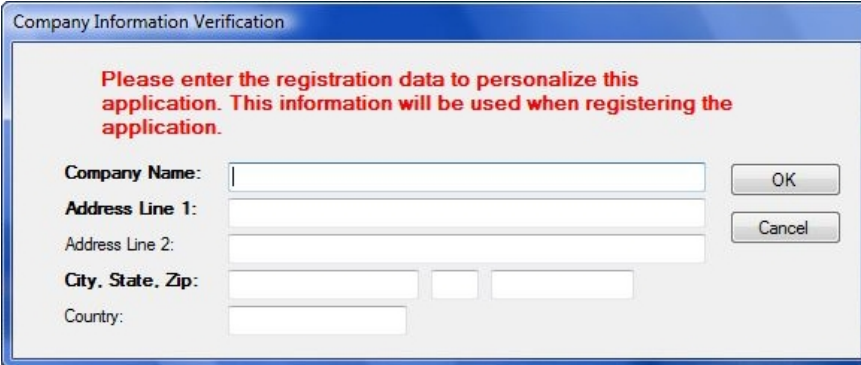
To start the program, double-click on the icon that was installed on the desktop by the installation program, or select the program from your Start menu.

Product Registration

The first step in the product registration process is to enter product registration information in the window shown in **Figure 3**. The following fields are required on the registration form:

- Company Name
- Address 1
- City, State, Zip Code

Once the data is entered and double-checked, click **OK** to continue.



Company Information Verification

Please enter the registration data to personalize this application. This information will be used when registering the application.

Company Name:

Address Line 1:

Address Line 2:

City, State, Zip:

Country:

OK

Cancel

Figure 3: Product Registration Information Window

3 Company Selection

Topics covered in this section:

- Adding a company to **E-File 1099-MISC 2011**

Adding a Company

NOTE: The procedure to add a company has been completely rewritten.

Open or Add a Company

If a company has not yet been selected, you will see the **Company Selection Window** shown in **Figure 4** below. The left side of the window contains the steps along with the total number of companies and the number of companies that can be added. As you progress through the steps, the step that you are currently on will be highlighted.

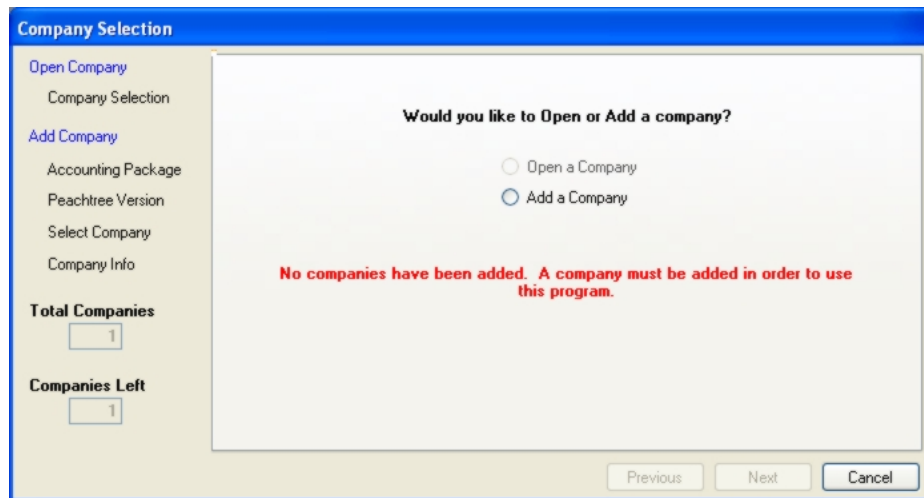


Figure 4: Company Selection Window

The first time this screen is accessed, **Open a Company** will be disabled. Select **Add a Company** and click **Next** to proceed to the next step.

Peachtree Version

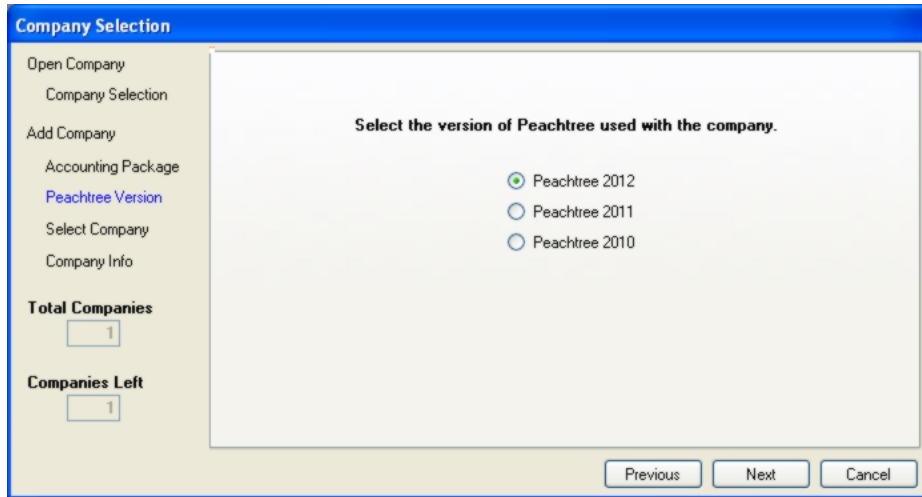


Figure 5: Company Selection Window, Peachtree Version Step

The version of Peachtree must be selected. Select **Peachtree 2010**, **Peachtree 2011** or **Peachtree 2012** and click **Next** to proceed.

Select Company

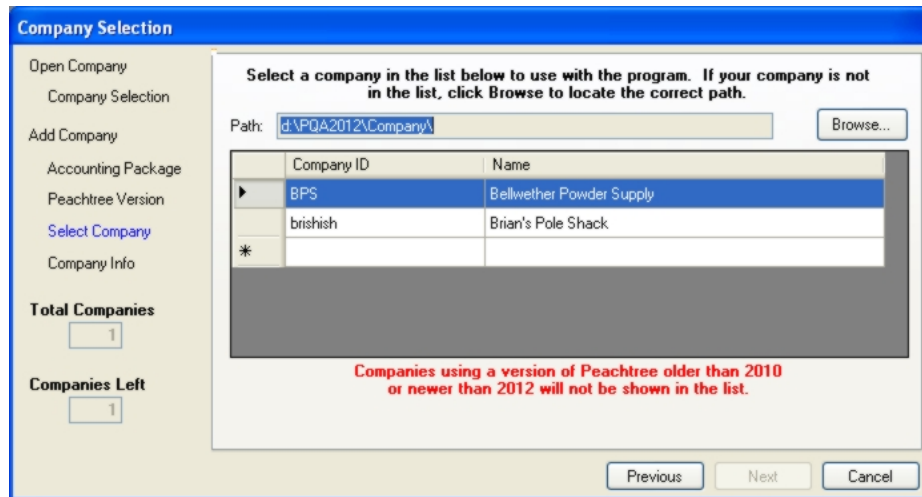


Figure 6: Company Selection Window, Company Selection Step (Peachtree)

Once a version of Peachtree is selected, E-File will list all valid companies in Peachtree's data path. If your company is not in the data path, click **Browse...** to locate the folder that contains your company folder. Sample Peachtree companies are not shown in the list.

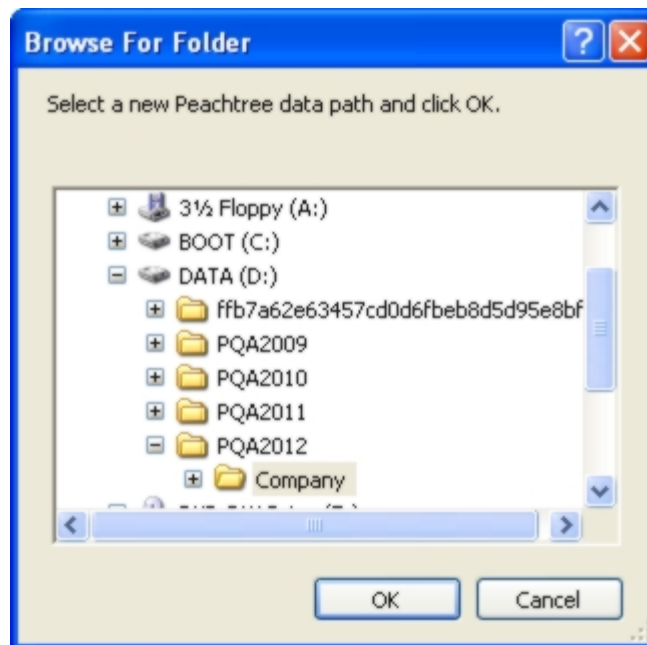


Figure 7: Browse for Peachtree Data Path

Company Information

Company Selection

Open Company
Company Selection

Add Company
Accounting Package
Peachtree Version
Select Company
Company Info

Total Companies
1

Companies Left
1

Warning: The information entered on this page will be used as the reporting and registration address.

Company ID: brishish

Company Name: Brian's Pole Shack

Address Line 1: 123 Anywhere Ln

Address Line 2:

City, State, Zip: Raleigh NC 12234

Country: USA FEIN: 121221133

SEIN: SUIN:

Please verify the information and click Next to continue.

Previous Next Cancel

Figure 8: Company Selection Window, Company Info Step

Once the company has been selected, E-File will retrieve and display the company information from the accounting software. If the company information needs to be changed, edit the information. Once the company information is acceptable click **Next** to continue. You will need to confirm the company information.

Verify Company Information

?

Please check to ensure the information below is correct.

Company Name: Brian's Pole Shack
Address Line 1: 123 Anywhere Ln
Address Line 2:
City, State, Zip: Raleigh, NC, 12234
Country: USA
FEIN: 121221133
SEIN:
SUIN:

Is this information correct?

Yes No

Figure 9: Verify Company Information Dialog

Once the company information has been verified against the information in the accounting package, the Company Selection step will be shown.

Opening a Company

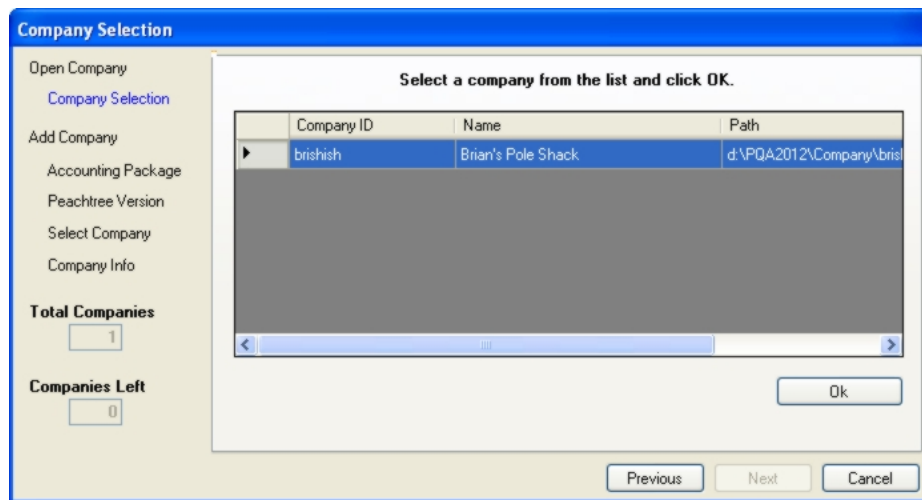


Figure 10: Company Selection Window, Company Selection Step

Once on the **Company Selection** step, click the company to open and click **OK** to open the company.

This page is intentionally blank.

4 Product Registration

Topics covered in this section:

- Trial Programs
- **E-File 1099-MISC 2011** Product Registration

Trial Programs

E-File installs as a 15-day trial. The program will perform the same as if it were registered, with the exception that each time the program starts, a trial notification window will appear. This is done to allow customers to try out the program before purchasing the product.

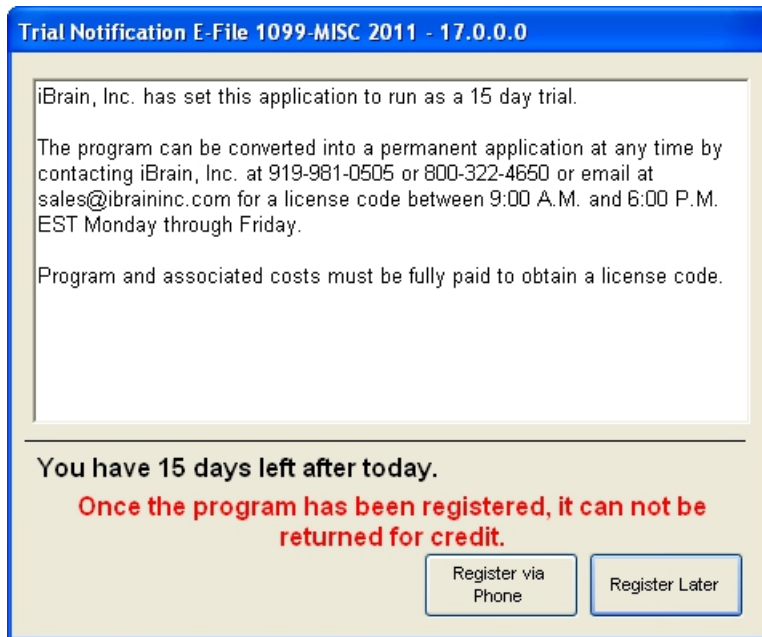


Figure 11: Trial Notification Window

Product Registration

Once the program has been purchased, the program can be registered by clicking **Register via Phone** from the Trial Notification window, or by selecting **Help, Register** and finally **Register via Phone** from the main window.

Product Registration: E-File 1099-MISC 2011 - 17.0.0.0

iBrain, Inc.

Intelligent Solutions for your Business

Application Information:
 Registration Information:
 3901 Barrett Drive
 Suite 205
 Raleigh, NC 27609

Product Registration Information:
 Registration: 240 905 848
 Computer Code: 569 276 0
 License Code:
 Password:

Write Down the Registration Code and Computer Code and Press Cancel if you wish to register later. Press the unlock button when you have received a License code and/or password from iBrain via telephone at 800-322-4650 or 919-981-0505 or email at sales@ibraininc.com.

Register Via Phone Cancel

Figure 12: Product Registration Window

Call iBrain, Inc. at 800-322-3650 or 919-981-0505 between 9:00 and 6:00 Eastern Time to obtain a license code and/or password.

iBrain, Inc. Support Policy

iBrian, Inc. warrants that this program will perform as set forth herein. If the program fails to so perform, in addition to the obligations of **iBrian, Inc.** as set forth in the License Agreement, **iBrian, Inc.** will furnish telephone technical support at no cost to the licensee. In the event performance problems result from data errors of the licensee or failure by the licensee to follow the instructions contained herein or for any other reason except those set forth in the opening sentence of this paragraph, **iBrian, Inc.** will furnish telephone technical support but will charge the licensee for telephone technical support time at **iBrian, Inc.**'s published telephone technical support rates, which are available upon request. Licensees are required to furnish **iBrian, Inc.** with credit card information prior to the beginning of any support call, which credit card information is deemed to be confidential. Licensees will be informed as soon as feasible whether a given support call will result in charges being billed to the licensee's credit card. The licensee may terminate the support call at will.

Feedback

If you would like to send any comments about this program to iBrain, you can contact us at

Accounting Software Solutions

A division of iBrain, Inc.
3901 Barrett Drive
Suite 205
Raleigh, NC 27609

Phone: (919) 981-0505 or
(800) 322-4650
Fax: (919) 981-0099
Email: support@ibraininc.com
Web site: www.ibraininc.com

Notes:

"Peachtree" when used herein as an entity refers to Sage Software North America, Inc., which is the sole owner of all copyrights and trademarks to its programs referred to herein.

"Windows" when used herein refers to Microsoft Windows, a registered trademark of Microsoft Corporation.

"**iBrain**" when used herein, other than as part of a program name, refers to **iBrain, Inc.**, which is the sole owner of all copyrights and trademarks to its programs referred to above.

"Acrobat ® Reader" Copyright © 1987-2011 Adobe Systems Incorporated. All rights reserved. Adobe, the Adobe logo, Acrobat, and the Acrobat logo are trademarks of Adobe Systems Incorporated.

All screen shots included herein are taken either from material published by Sage Software North America or from material produced by iBrain, Inc. and none are relevant to any real entity.